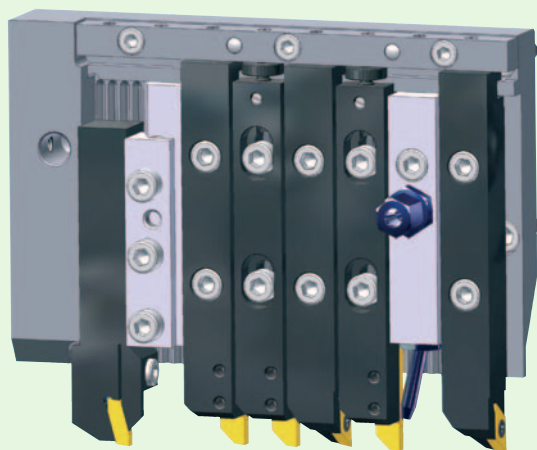




Système d'outils modulaire  
*Vielseitiges Werkzeugsystem*  
 Modular tooling system

Star  
 SB-16

R coupe à droite  
*rechtsschneidend*  
 right hand cut



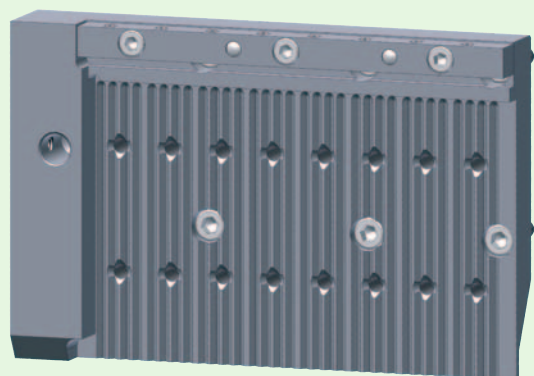
- Jusqu'à 8 outils (au lieu de 5).
  - Changement d'outil simple et rapide, possibilité de **préréglage** et de réglage de la longueur des outils.
  - Système de fixation des porte-plaquettes fiable et **rigide**, avec rainures longitudinales et section d'outil importante (16x16mm).
  - **Système d'outils modulaire**, utilisation simple, combinaison possible avec des outils standards (16x16mm) ainsi que des modules d'**arrosage**.
  - **Grand choix** d'outils pour plaquettes ISO et Applitec.
- **Bis 8 Werkzeuge** (anstatt 5).
  - *Einfacher und schneller Werkzeugwechsel, voreinstellbar auf feste oder einstellbare Länge.*
  - **Stabiles und Zuverlässiges Werkzeug-Spannsystem** durch Längsverzahnung und grosser Halter-Querschnitt (16x16mm).
  - **Vielseitiges Werkzeugsystem**, sehr einfacher Einsatz, Kombination mit Standard Werkzeuge (16x16mm) und **Kühlmittel-Zufuhr** möglich.
  - **Grosse Auswahl** von Halter für ISO und Applitec Wendepaletten.

- **Up to 8 tools** (instead of 5).
- Easy and quick tool replacement, with **presetting** on fixed or adjustable length.
- **Stable and reliable tool location system** with longitudinal serrations and large square shanks (16x16mm).
- **Versatile tooling system**, easy to use, possible combination with standard tools (16x16mm) and **coolant supply** devices.
- **Wide range** of holders for ISO and Applitec inserts.

Plaque porte-outils et accessoires

*Werkzeugplatte und Zubehör*

Tool holder plate and accessories

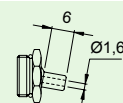


Module de serrage pour outils standards 16x16mm  
*Spann-Element für Standard-Werkzeuge 16x16mm*  
 Clamping unit for standard holders 16x16mm

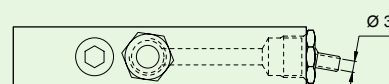


Art. N° **ML16-FIX-16/17**

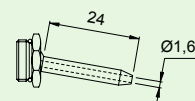
Module d'arrosage  
*Kühlmittel-Zufuhr Element*  
 Coolant supply unit



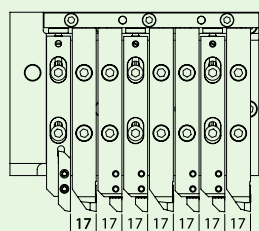
**ML-JET-HP6**



Art. N° **ML16-JET**



**ML-JET-HP24**



Art. N°

**ML16-STAR-SB16**

Utiliser les porte-plaquettes série ML16  
*WSP-Halter Serie ML16 verwenden*  
 For Insert holders series ML16

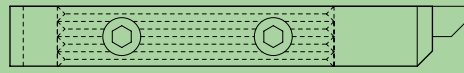


## Porte-plaquettes ML16

## WSP-Halter ML16

## Insert holders ML16

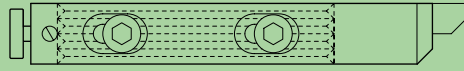
longueur fixe  
*Fixlänge*  
fixed length



# R

coupe à droite  
*rechtsschneidend*  
right hand cut

réglable  
*einstellbar*  
presetable



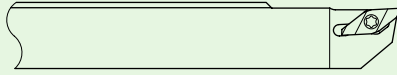
Pour plaquette type...  
*Für WSP-Typ...*  
For insert type...

Art. N°

Art. N°

ML16f-340

ML16a-340



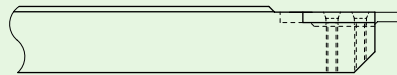
**TOP-LINE**  
type 347 - 349

(👉 catalogue p. 1.5)



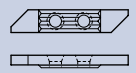
ML16f-740

ML16a-740



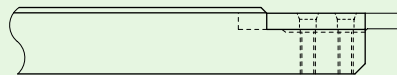
**TOP-LINE**  
type 741 - 747

(👉 catalogue p. 1.13-1.19)



ML16f-760

ML16a-760



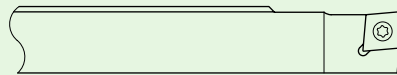
**TOP-LINE**  
type 761 - 767

(👉 catalogue p. 1.27-1.37)



ML16f-SCLCR09

ML16a-SCLCR09



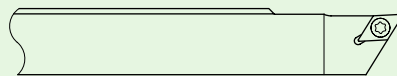
**ISO-LINE**  
CCxx-09T3xx (type 12xx)

(👉 catalogue p. 3.8-3.17)



ML16f-SDJCR07

ML16a-SDJCR07



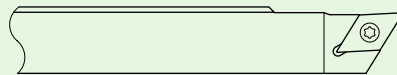
**ISO-LINE**  
DCxx-0702xx (type 13xx)

(👉 catalogue p. 3.8-3.17)



ML16f-SDJCR11

ML16a-SDJCR11



**ISO-LINE**  
DCxx-11T3xx (type 14xx)

(👉 catalogue p. 3.8-3.17)



ML16f-SVJCR11

ML16a-SVJCR11



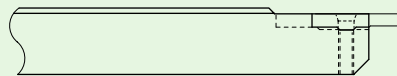
**ISO-LINE**  
VCxx-1103xx (type 16xx)

(👉 catalogue p. 3.8-3.17)



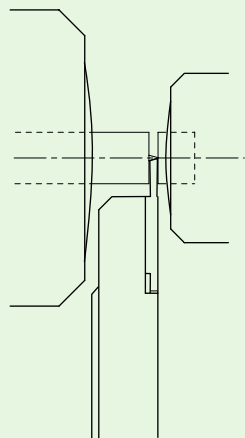
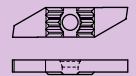
ML16f-260

ML16a-260

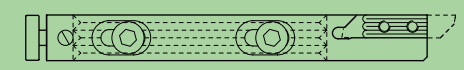


**ECO-LINE**  
type 261 - 266

(👉 catalogue p. 4.1-4.2)



réglable  
*einstellbar*  
presetable



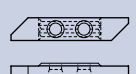
Coupe déportée  
*Vesetztes Schneiden*  
Off line cut

ML16a-730-V



**TOP-LINE**  
type 731R

(👉 catalogue p. 1.15)

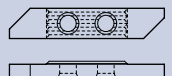


ML16a-750-V

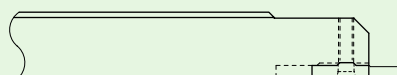


**TOP-LINE**  
type 751R

(👉 catalogue p. 1.29)



ML16a-250-V



**ECO-LINE**  
type 251R

(👉 catalogue p. 4.1)

