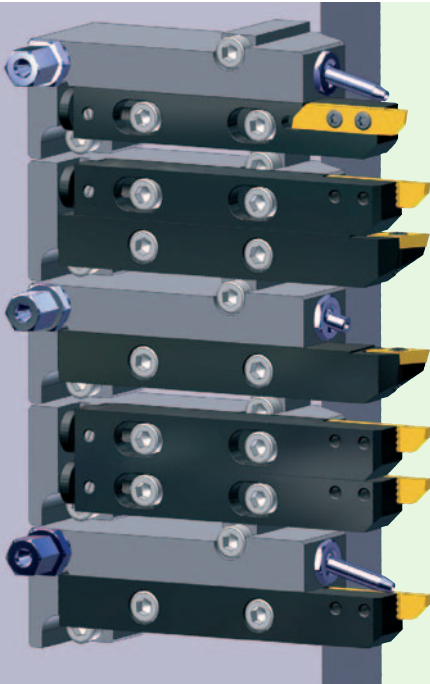




Système d'outils modulaire Vielseitiges Werkzeugsystem Modular tooling system

TORNOS DECO 13

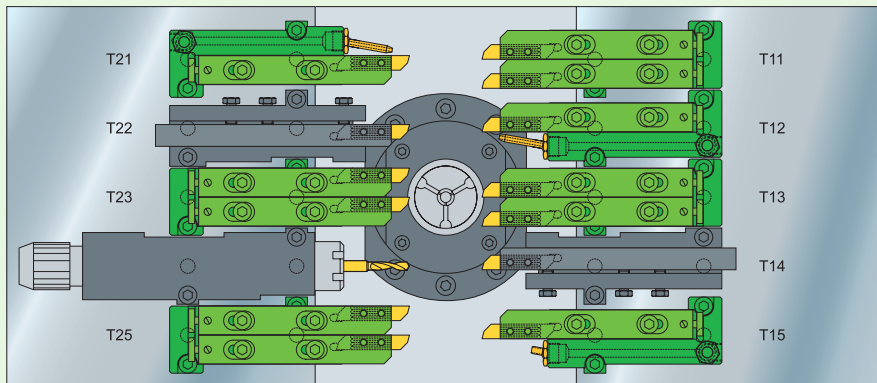
R coupe à droite
rechtsschneidend
right hand cut



- **Système d'outils modulaire**, utilisation simple, combinaison possible avec des outils standards ainsi que des outils tournants.
- **Jusqu'à 18 outils** (au lieu de 10), en utilisant 8 portes-outils doubles.
- Porte-outils avec **arrosage** parfaitement aligné sur les plaquettes, raccordement indépendant.
- Changement d'outil simple et rapide, possibilité de **préréglage** et de réglage de la longueur des outils.
- Système de fixation des porte-plaquettes fiable et **rigide**, avec rainures longitudinales et section d'outil importante (16x16mm).
- **Grand choix** d'outils pour plaquettes ISO et Applitec.

- **Vielseitiges Werkzeugsystem**, sehr einfacher Einsatz in Verbindung mit Standard Werkzeughalter und angetriebene Werkzeuge.
- **Bis 18 Werkzeuge** (anstatt 10), beim Einsatz von 8 Doppelhalter.
- Grundhalter mit **Kühlmittel-Zufuhr**, perfekte Ausrichtung auf die Schneidplatte, separater Anschluss.
- Einfacher und schneller Werkzeugwechsel, **voreinstellbar** auf feste oder einstellbare Länge.
- **Stabiles** und Zuverlässiges Werkzeug-Spannsystem durch Längsverzahnung und grosser Halter-Querschnitt (16x16mm).
- **Grosse Auswahl** von Halter für ISO und Applitec Wendepplatten.

- **Very versatile tooling system**, easy to use in combination with standard and rotating tools.
- **Up to 18 tools** (instead of 10), by using 8 twin tool holders.
- Tool holders with **coolant supply**, perfectly in line with the cutting insert, separate connection.
- Easy and quick tool replacement, with **presetting** on fixed or adjustable length.
- **Stable** and reliable tool location system with longitudinal serrations and large square shanks (16x16mm).
- **Wide range** of holders for ISO and Applitec inserts.



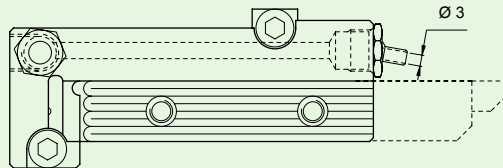
Bases porte-outils

Grundhalter

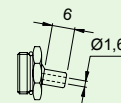
Tool holder bases

Options

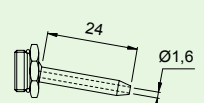
Base porte-outils avec arrosage
Grundhalter mit Kühlmittel-Zufuhr
Tool holder base with coolant supply



Art. N° **ML16-DECO13-JET**

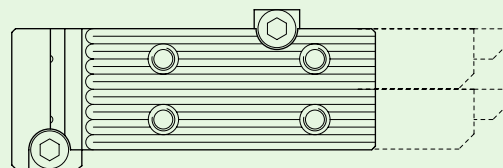


ML-JET-HP6



ML-JET-HP24

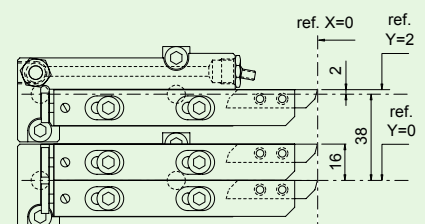
Base porte-outils double
Doppel-Grundhalter
Twin tool holder base



Art. N° **ML16-DECO13-DUO**

Pas possible sur T15 / T21
Nicht möglich auf T15 / T21
Not possible on T15 / T21

Setup



Utiliser les porte-plaquettes série ML16
WSP-Halter Serie ML16 verwenden
For Insert holders series ML16

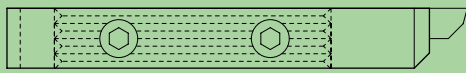


Porte-plaquettes ML16

WSP-Halter ML16

Insert holders ML16

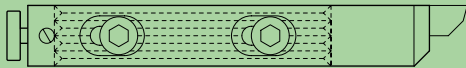
longueur fixe
Fixlänge
fixed length



R

coupe à droite
rechtsschneidend
right hand cut

réglable
einstellbar
presetable



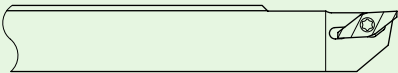
Pour plaquette type...
Für WSP-Typ...
For insert type...

Art. N°

Art. N°

ML16f-340

ML16a-340



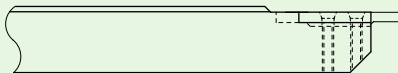
TOP-LINE
type 347 - 349

(👉 catalogue p. 1.5)



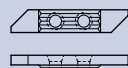
ML16f-740

ML16a-740



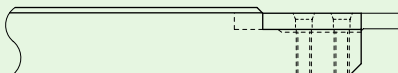
TOP-LINE
type 741 - 747

(👉 catalogue p. 1.13-1.19)



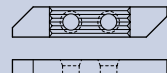
ML16f-760

ML16a-760



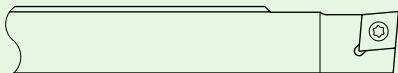
TOP-LINE
type 761 - 767

(👉 catalogue p. 1.27-1.37)



ML16f-SCLCR09

ML16a-SCLCR09



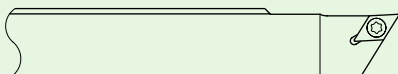
ISO-LINE
CCxx-09T3xx (type 12xx)

(👉 catalogue p. 3.8-3.17)



ML16f-SDJCR07

ML16a-SDJCR07



ISO-LINE
DCxx-0702xx (type 13xx)

(👉 catalogue p. 3.8-3.17)



ML16f-SDJCR11

ML16a-SDJCR11



ISO-LINE
DCxx-11T3xx (type 14xx)

(👉 catalogue p. 3.8-3.17)



ML16f-SVJCR11

ML16a-SVJCR11



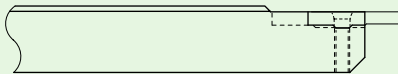
ISO-LINE
VCxx-1103xx (type 16xx)

(👉 catalogue p. 3.8-3.17)



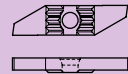
ML16f-260

ML16a-260

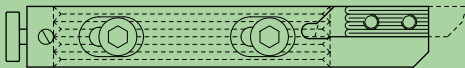


ECO-LINE
type 261 - 266

(👉 catalogue p. 4.1-4.2)



réglable
einstellbar
presetable

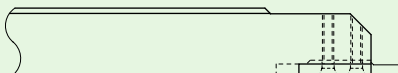


Art. N°

Coupe déportée
Vesetztes Schneiden
Off line cut

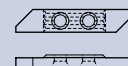
Contre-opération
Gegenbearbeitung
Opposite machining
T51 T52 T53

ML16a-730-V



TOP-LINE
type 731R

(👉 p. 1.15)



type 731 - 737

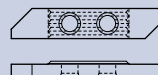
(👉 p. 1.13-1.19)

ML16a-750-V



TOP-LINE
type 751R

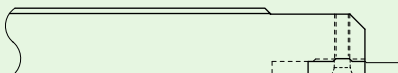
(👉 p. 1.29)



type 751 - 757

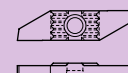
(👉 p. 1.27-1.37)

ML16a-250-V



ECO-LINE
type 251R

(👉 p. 4.1)



type 251 - 256

(👉 p. 4.1-4.2)