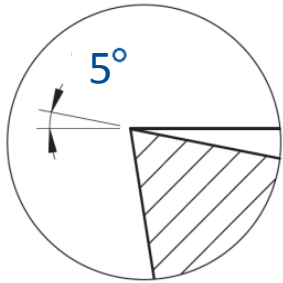


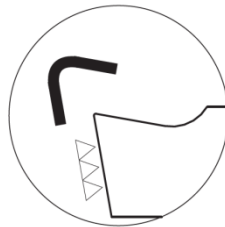
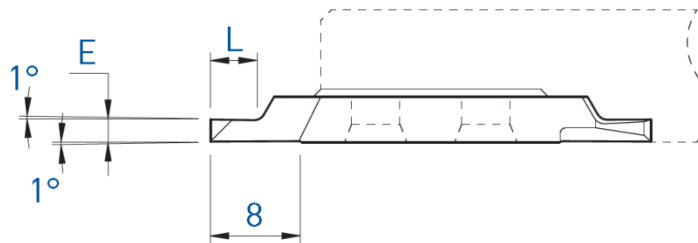
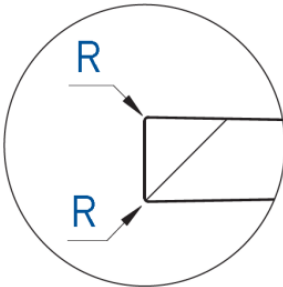
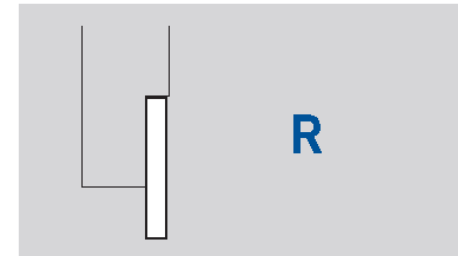
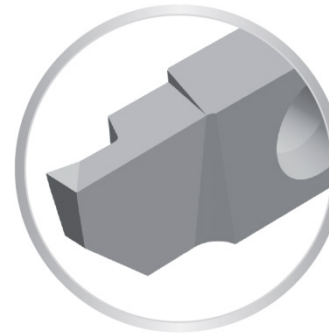
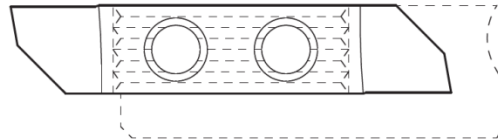
TOP-line 764X5-EP



Foncer-tourner / Einstechen und drehen / Grooving and turning



R



Arête de coupe honée
Gehonte Schneidkante
Honed edge

f min: 0.02 mm/U

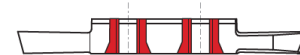
E	L	R	Art. N°	TiAlN	TiN	N (µk20)
1.5	3	0.08	764X5-1.5-R08-EP	■	■	■
2.0	4	0.08	764X5-2.0-R08-EP	■	■	■
2.5	6	0.08	764X5-2.5-R08-EP	■	■	■
2.5	6	0.15	764X5-2.5-R15-EP	■	■	■
3.0	6	0.08	764X5-3.0-R08-EP	■	■	■
3.0	6	0.15	764X5-3.0-R15-EP	■	■	■
4.0	8	0.15	764X5-4.0-R15-EP	■	■	■
4.0	8	0.35	764X5-4.0-R35-EP	■	■	■



APPLITEC
SWISS TOOLING



7XX-XX-B



Sur demande pour serrage type B
Wahlweise für B-Spannsystem
On request for B clamping system