

Outils et porte-outils traditionnels pour le décolletage et la mécanique de précision

- Porte-outils
- Forets à centrer
- Burins intérieurs
- Porte-molettes
- Molettes MD

Übliche Werkzeuge und Halter für Decolletage und Präzisionsmechanik

- Werkzeughalter
- Zentrierbohrer
- Innendrehwerkzeuge
- Rändelhalter
- Rändelrädchen

Usual tools and tool holders for automatic lathes and precision mechanics

- Tool holders
- Centring drills
- Internal turning tools
- Knurl holders
- Knurling wheels



Index

Porte-outils
Werkzeughalter
Tool holders

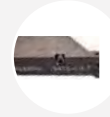
Type 14xx / 24xx



> 12.02

Porte-outils monoblocs pour machines Tornos
Monoblockwerkzeughalter für Tornos Maschinen
Monobloc tool holders for Tornos machines

Type 2435 / 2436



> 12.12

Forets à centrer plats
Zentrierflachbohrer
Centering flat drills

Type 1200 / 2200



> 12.14

Forets à centrer hélicoïdaux
Zentrierspiralbohrer
Centering twist drills

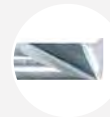
Type 15xx / 25xx



> 12.15

Burins intérieurs en métal dur
Vollhartmetall Innendrehwerkzeuge
Solid carbide internal turning tools

Type 16xx / 26xx



> 12.16

Porte-molettes
Rändelhalter
Knurl holders

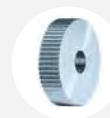
Type 1402 / 2402



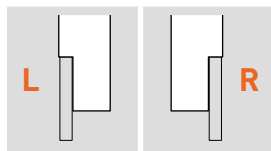
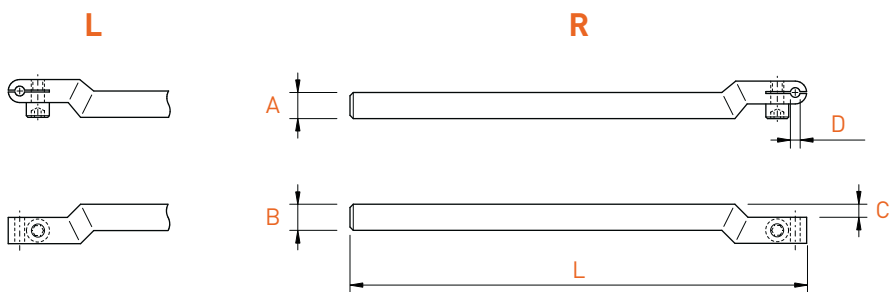
> 12.18

Molettes en métal dur
Vollhartmetall Rändelrädchen
Solid carbide knurling wheels

Type 1107



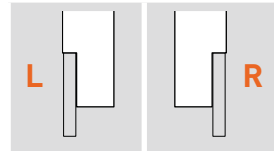
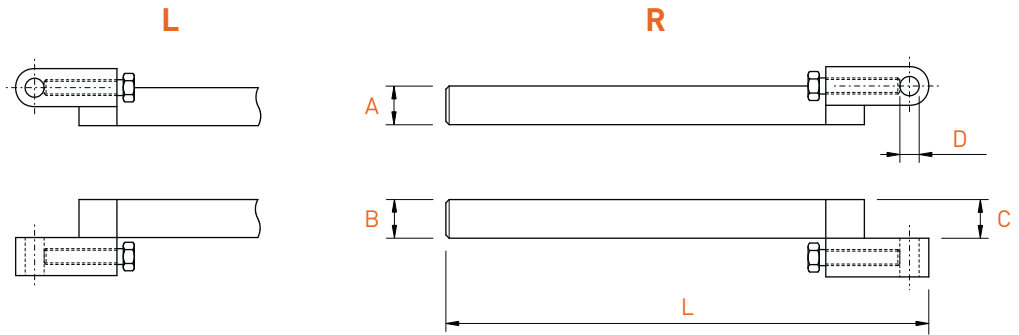
> 12.19



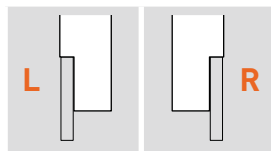
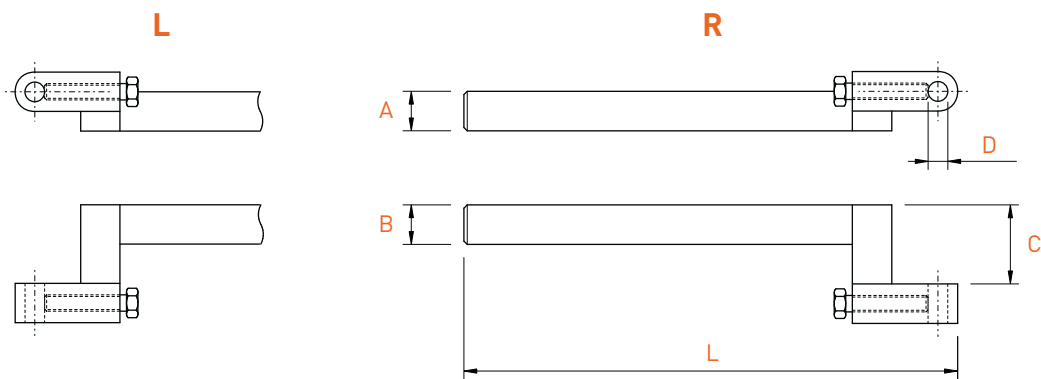
A x B	L	C	D	Art. N°	Art. N°
6 x 6	132	3	1.5	1400-J-615	2400-J-615
6 x 6	132	3	2.0	1400-J-620	2400-J-620
6 x 6	132	3	3.0	1400-J-630	2400-J-630
7 x 7	140	3	1.5	1400-J-715	2400-J-715
7 x 7	140	3	2.0	1400-J-720	2400-J-720
7 x 7	140	3	3.0	1400-J-730	2400-J-730
8 x 8	140	4	1.5	1400-J-815	2400-J-815
8 x 8	140	4	2.0	1400-J-820	2400-J-820
8 x 8	140	4	3.0	1400-J-830	2400-J-830

Porte-outils
 Werkzeughalter
 Tool holders

1401-K / 2401-K



A x B	L	C	D	Art. N°	Art. N°
7 x 7	146	7	2.0	1401-K-720	-
7 x 7	146	7	3.0	1401-K-730	2401-K-730
7 x 7	146	7	4.0	1401-K-740	2401-K-740
8 x 8	146	8	2.0	1401-K-820	-
8 x 8	146	8	3.0	1401-K-830	2401-K-830
8 x 8	146	8	4.0	1401-K-840	2401-K-840
8 x 8	146	8	5.0	1401-K-850	2401-K-850
8 x 8	146	8	6.0	1401-K-860	2401-K-860
10 x 10	150	10	3.0	-	2401-K-1030
10 x 10	150	10	4.0	1401-K-1040	2401-K-1040
10 x 10	150	10	5.0	1401-K-1050	2401-K-1050
10 x 10	150	10	6.0	1401-K-1060	2401-K-1060
10 x 10	150	10	7.0	1401-K-1070	2401-K-1070
12 x 12	150	12	3.0	-	2401-K-1230
12 x 12	150	12	4.0	1401-K-1240	2401-K-1240
12 x 12	150	12	5.0	1401-K-1250	2401-K-1250
12 x 12	150	12	6.0	1401-K-1260	2401-K-1260
12 x 12	150	12	8.0	1401-K-1280	2401-K-1280
14 x 14	150	14	4.0	1401-K-1440	2401-K-1440
14 x 14	150	14	6.0	1401-K-1460	2401-K-1460
14 x 14	150	14	8.0	1401-K-1480	2401-K-1480



A x B	L	C	D	Art. N°	Art. N°
7 x 7	146	12	4.0	1420-7124	2420-7124
8 x 8	146	12	4.0	1420-8124	2420-8124
8 x 8	146	14	3.0	1420-8143	2420-8143
8 x 8	146	15	5.0	1420-8155	2420-8155
8 x 8	146	20	5.0	1420-8205	2420-8205
10 x 10	150	20	6.0	1420-10206	2420-10206
12 x 12	150	18	6.0	1420-12186	2420-12186
12 x 12	150	18	8.0	1420-12188	-
12 x 12	150	24	8.0	1420-12248	2420-12248
14 x 14	150	20	8.0	1420-14208	2420-14208
14 x 14	150	24	8.0	1420-14248	2420-14248

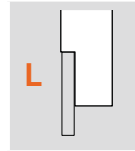
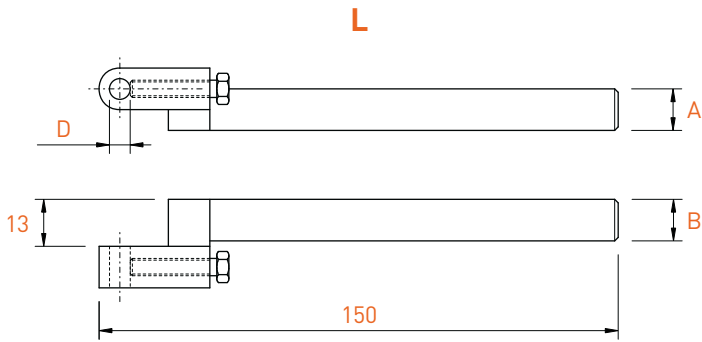
Porte-outils

Werkzeughalter

Tool holders

∅ 12 x 12

1460



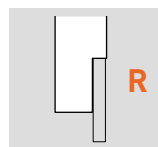
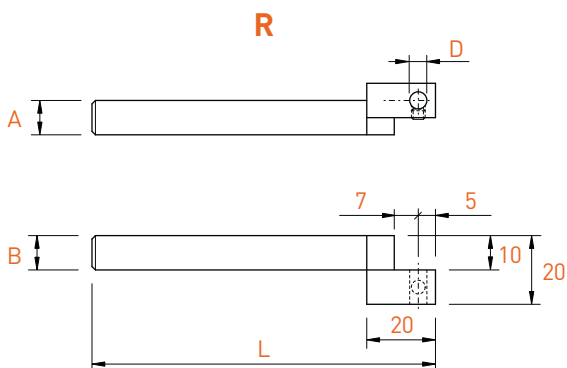
A x B	D	Art. N°
12 x 12	4.0	1460-4
12 x 12	5.0	1460-5
12 x 12	6.0	1460-6
12 x 12	8.0	1460-8

TOOLING-LINE

Porte-outils
Werkzeughalter
Tool holders

∅ 10 x 10

2450-SP

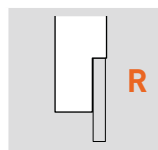
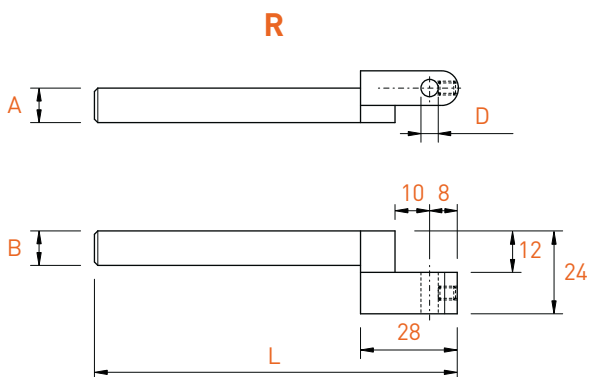


A x B	L	D	Art. N°
10 x 10	100	3.0	2450-SP-3
10 x 10	100	4.0	2450-SP-4
10 x 10	100	5.0	2450-SP-5
10 x 10	100	6.0	2450-SP-6
10 x 10	120	3.0	2450-SP-3-120
10 x 10	120	4.0	2450-SP-4-120
10 x 10	120	5.0	2450-SP-5-120
10 x 10	120	6.0	2450-SP-6-120

Porte-outils
Werkzeughalter
Tool holders

∅ 10 x 10

2470

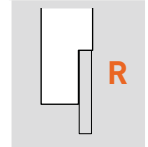
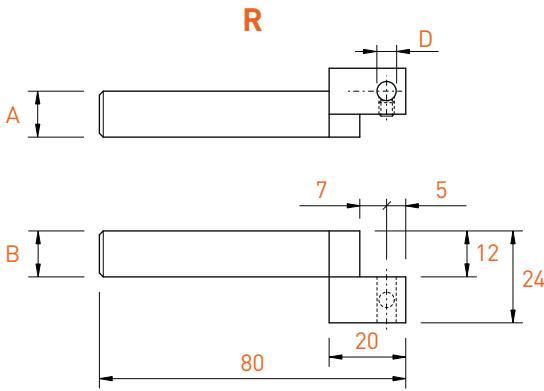


A x B	L	D	Art. N°
10 x 10	105	3.0	2470-3
10 x 10	105	4.0	2470-4
10 x 10	105	5.0	2470-5
10 x 10	105	6.0	2470-6
10 x 10	105	7.0	2470-7

Porte-outils
Werkzeughalter
Tool holders

∅ 12 x 12

2450

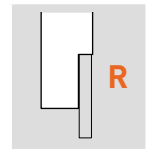
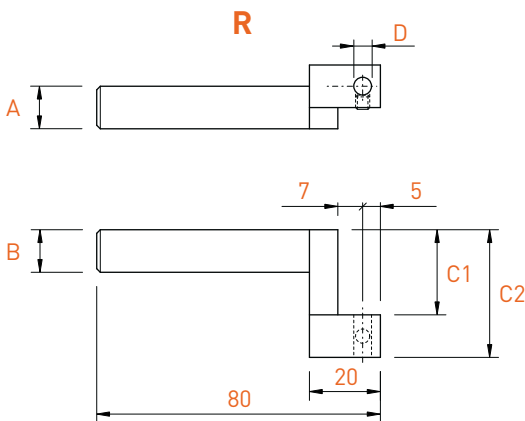


A x B	D	Art. N°
12 x 12	3.0	2450-3
12 x 12	4.0	2450-4
12 x 12	5.0	2450-5
12 x 12	6.0	2450-6
12 x 12	8.0	2450-8

Porte-outils
Werkzeughalter
Tool holders

∅ 12 x 12

2460



A x B	C1	C2	D	Art. N°
12 x 12	16	28	4.0	2460-284
12 x 12	16	28	6.0	2460-286
12 x 12	16	28	8.0	2460-288
12 x 12	20	32	4.0	2460-324
12 x 12	20	32	6.0	2460-326
12 x 12	20	32	8.0	2460-328
12 x 12	24	36	4.0	2460-364
12 x 12	24	36	6.0	2460-366
12 x 12	24	36	8.0	2460-368



A x B	L	C	D	Art. N°
8 x 8	120	8	3.0	2405-K-830
8 x 8	120	8	4.0	2405-K-840
8 x 8	120	8	5.0	2405-K-850
8 x 8	120	8	6.0	2405-K-860
10 x 10	100	10	4.0	2405-K-1040
10 x 10	100	10	5.0	2405-K-1050
10 x 10	100	10	6.0	2405-K-1060
12 x 12	150	12	4.0	2405-K-1240
12 x 12	150	12	6.0	2405-K-1260
12 x 12	150	12	8.0	2405-K-1280

Porte-outils

Werkzeughalter

Tool holders

2425



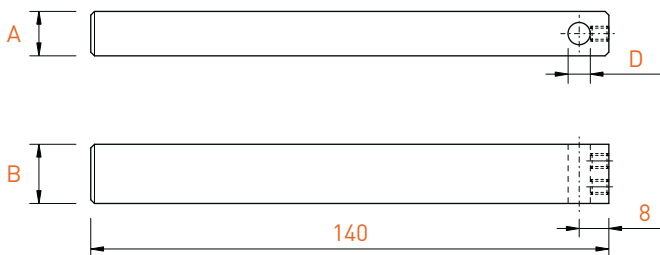
A x B	L	C	D	Art. N°
8 x 8	120	12	4.0	2425-8124
8 x 8	120	15	5.0	2425-8155
8 x 8	120	20	5.0	2425-8205
10 x 10	100	15	6.0	2425-10156
10 x 10	100	20	6.0	2425-10206
12 x 12	150	18	6.0	2425-12186
12 x 12	150	24	8.0	2425-12248

TOOLING-LINE

Porte-outils
Werkzeughalter
Tool holders

□ 12 x 16

2441



A x B	D	Art. N°
12 x 16	3.0	2441-0-3
12 x 16	4.0	2441-0-4
12 x 16	5.0	2441-0-5
12 x 16	6.0	2441-0-6

Porte-outils
Werkzeughalter
Tool holders

□ 16 x 16

2440-0

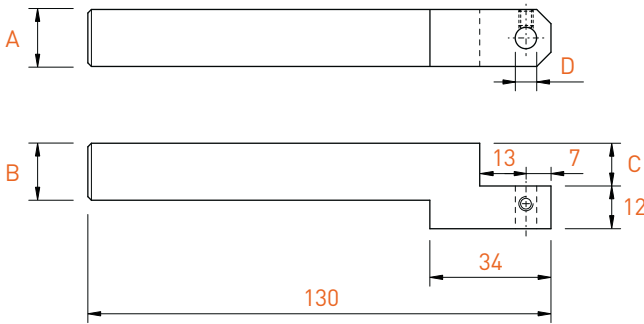


A x B	D	Art. N°
16 x 16	3.0	2440-0-3
16 x 16	4.0	2440-0-4
16 x 16	5.0	2440-0-5
16 x 16	6.0	2440-0-6

Porte-outils
Werkzeughalter
Tool holders

∅ 16 x 16

2440-8 / 2440-12

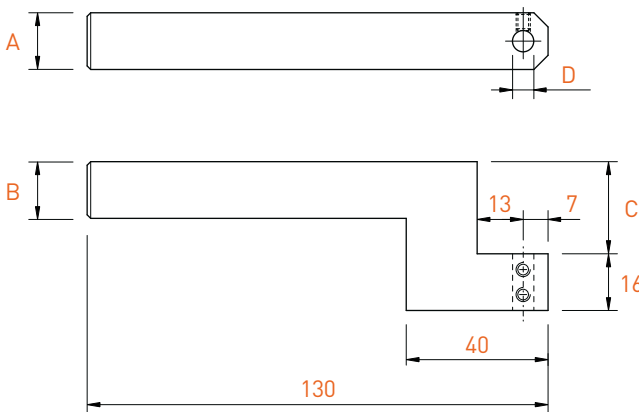


A x B	C	D	Art. N°
16 x 16	8	3.0	2440-8-3
16 x 16	8	4.0	2440-8-4
16 x 16	8	5.0	2440-8-5
16 x 16	8	6.0	2440-8-6
16 x 16	8	8.0	2440-8-8
16 x 16	12	3.0	2440-12-3
16 x 16	12	4.0	2440-12-4
16 x 16	12	5.0	2440-12-5
16 x 16	12	6.0	2440-12-6
16 x 16	12	8.0	2440-12-8

Porte-outils
Werkzeughalter
Tool holders

∅ 16 x 16

2440-18 / 2440-26



A x B	C	D	Art. N°
16 x 16	18	4.0	2440-18-4
16 x 16	18	5.0	2440-18-5
16 x 16	18	6.0	2440-18-6
16 x 16	18	8.0	2440-18-8
16 x 16	26	4.0	2440-26-4
16 x 16	26	5.0	2440-26-5
16 x 16	26	6.0	2440-26-6
16 x 16	26	8.0	2440-26-8

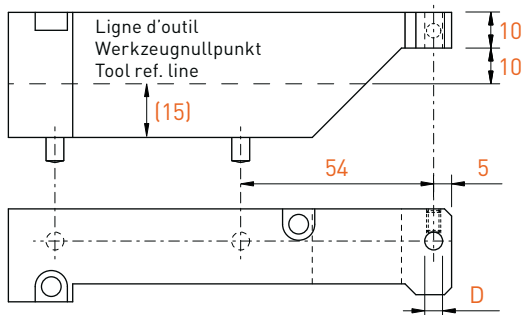
TOOLING-LINE

Porte-outils pour machines Tornos DECO 7/10 / EvoDECO 10

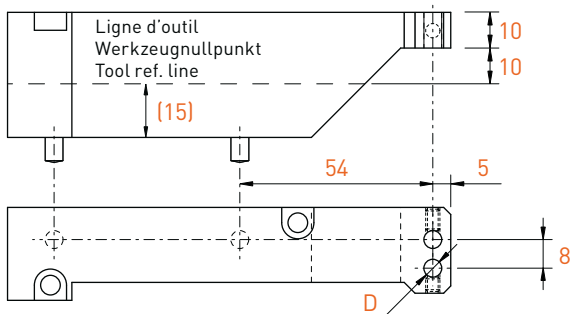
Werkzeughalter für Tornos DECO 7/10 / EvoDECO 10 Maschinen

Tool holders for Tornos DECO 7/10 / EvoDECO 10 machines

2435 / 2435-T



D	Art. N°
3.0	2435-3
4.0	2435-4
5.0	2435-5
6.0	2435-6



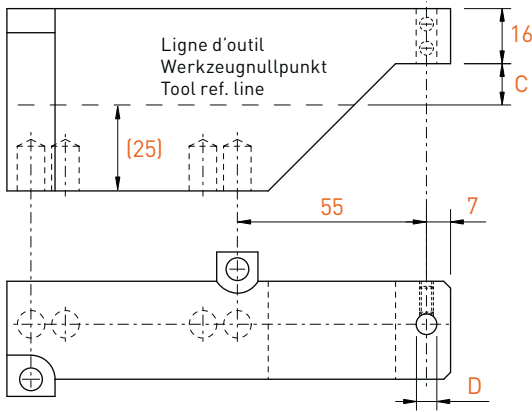
D (2x)	Art. N°
3.0	2435-3-T
4.0	2435-4-T
5.0	2435-5-T
6.0	2435-6-T

Porte-outils pour machines Tornos DECO 13 / EvoDECO 16

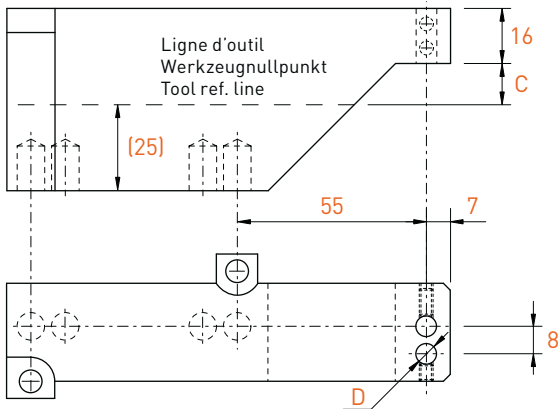
Werkzeughalter für Tornos DECO 13 / EvoDECO 16 Maschinen

Tool holders for Tornos DECO 13 / EvoDECO 16 machines

2436 / 2436T



C	D	Art. N°
12	3.0	2436-12-3
12	4.0	2436-12-4
12	5.0	2436-12-5
12	6.0	2436-12-6
12	8.0	2436-12-8
18	3.0	2436-18-3
18	4.0	2436-18-4
18	5.0	2436-18-5
18	6.0	2436-18-6
18	8.0	2436-18-8



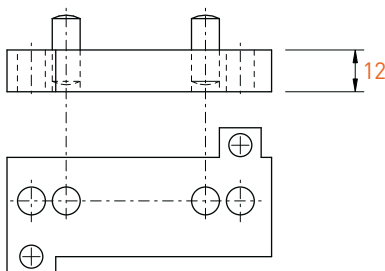
C	D (2x)	Art. N°
12	3.0	2436T-12-3
12	4.0	2436T-12-4
12	5.0	2436T-12-5
12	6.0	2436T-12-6
18	3.0	2436T-18-3
18	4.0	2436T-18-4
18	5.0	2436T-18-5
18	6.0	2436T-18-6

Entretoise

Erhöhungplatte

Spacer

2436-S12



Art. N°

2436-S12

TOOLING-LINE

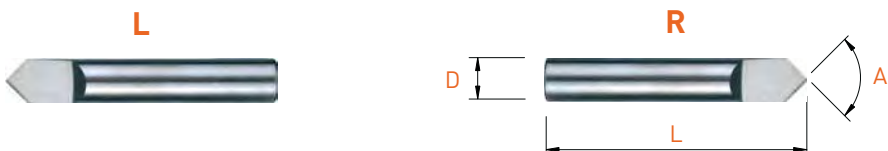
Forets à centrer plats

Zentrierflachbohrer

Centering flat drills

90°

1200 / 2200

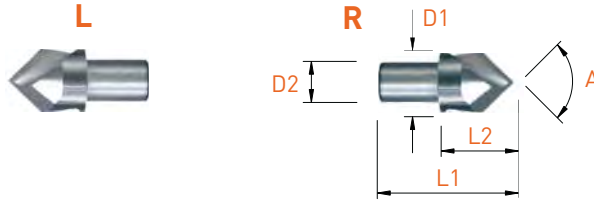


MD VHM HM			L	R
A	D	L	Art. N°	Art. N°
90°	3	17	1200-317	2200-317
90°	3	38	1200-338	2200-338
90°	4	40	1200-440	2200-440
90°	5	50	1200-550	2200-550
90°	6	50	1200-650	2200-650
90°	8	58	1200-858	2200-858
90°	10	66	1200-1066	2200-1066
90°	12	73	1200-1273	2200-1273

Forets à centrer hélicoïdaux
 Zentrierspiralbohrer
 Centering twist drills

90°

1500 / 2520

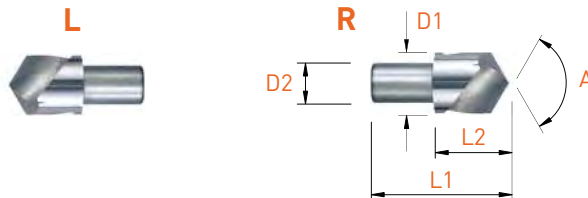


A	D1	D2	L1	L2	HSS		MD / VHM / HM	
					L	R	L	R
90°	5	4	17	8	Art. N°	Art. N°	Art. N°	Art. N°
90°	5	4	17	8	1500-5-HSS	2520-5-HSS	1500-5	2520-5
90°	7	5	17	8	1500-7-HSS	2520-7-HSS	1500-7	2520-7
90°	10	6	22	10	1500-10-HSS	2520-10-HSS	1500-10	2520-10
90°	12	8	26	12	1500-12-HSS	2520-12-HSS	1500-12	2520-12

Forets à centrer hélicoïdaux
 Zentrierspiralbohrer
 Centering twist drills

120°

1510 / 2530

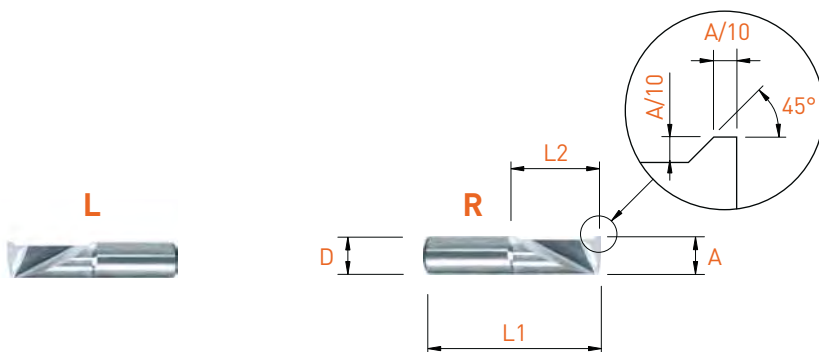


A	D1	D2	L1	L2	MD / VHM / HM	
					L	R
120°	5	4	17	8	Art. N°	Art. N°
120°	5	4	17	8	1510-5	2530-5
120°	7	5	17	8	1510-7	2530-7
120°	10	6	22	10	1510-10	2530-10
120°	12	8	26	12	1510-12	2530-12

TOOLING-LINE

Burins intérieurs en métal dur
 Vollhartmetall Innendrehwerkzeuge
 Solid carbide internal turning tools

1600 / 2620



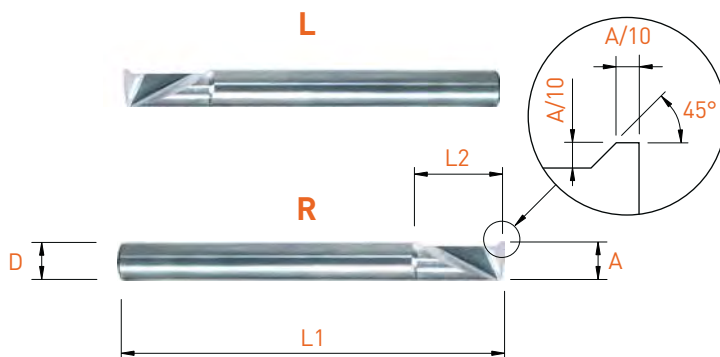
				L	R
MD VHM HM				Art. N°	Art. N°
A -0.05	D	L1	L2	Art. N°	Art. N°
2	3	13	4	1600-2-4	2620-2-4
3	3	15	6	1600-3-6	2620-3-6
4	4	17	8	1600-4-8	2620-4-8
4	4	21	12	1600-4-12	2620-4-12
5	5	21	10	1600-5-10	2620-5-10
5	5	26	15	1600-5-15	2620-5-15
6	6	25	12	1600-6-12	2620-6-12
6	6	31	18	1600-6-18	2620-6-18
8	8	32	16	1600-8-16	2620-8-16
8	8	40	24	1600-8-24	2620-8-24

Burins intérieurs en métal dur

Vollhartmetall Innendrehwerkzeuge

Solid carbide internal turning tools

1610 / 2630



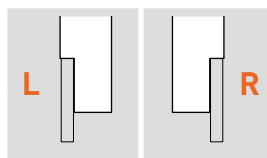
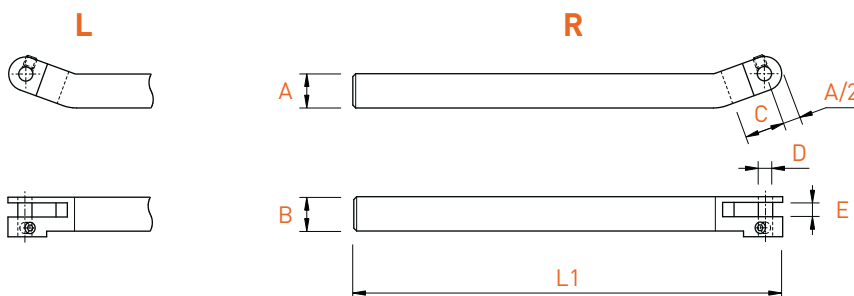
MD VHM HM				L	R
A -0.05	D	L1	L2	Art. N°	Art. N°
2	3	38	4	1610-2-4	2630-2-4
3	3	38	6	1610-3-6	2630-3-6
4	4	40	8	1610-4-8	2630-4-8
4	4	40	12	1610-4-12	2630-4-12
5	5	50	10	1610-5-10	2630-5-10
5	5	54	15	1610-5-15	2630-5-15
6	6	50	12	1610-6-12	2630-6-12
6	6	57	18	1610-6-18	2630-6-18
8	8	58	16	1610-8-16	2630-8-16
8	8	63	24	1610-8-24	2630-8-24
10	10	72	30	-	2630-10-30
12	12	83	36	-	2630-12-36

Porte-molettes

Rändelhalter

Knurl holders

1402 / 2402



Pièces de rechange
Ersatzteile
Spare parts



A x B	L	E	D	C	A/2	Art. N°	Art. N°	Art. N°
6 x 6	132	2	3	10	3	1402-623	2402-623	GP-Ø3X10-A6H2.5
6 x 6	132	3	3	10	3	1402-633	2402-633	GP-Ø3X10-A6H2.5
7 x 7	140	2	3	10	3.5	1402-723	2402-723	GP-Ø3X12-A6H2.5
7 x 7	140	3	3	10	3.5	1402-733	2402-733	GP-Ø3X12-A6H2.5
7 x 7	140	4	3	10	3.5	1402-743	2402-743	GP-Ø3X12-A6H2.5
7 x 7	140	2	4	10	3.5	1402-724	2402-724	GP-Ø4X12-A6H3.5
7 x 7	140	3	4	10	3.5	1402-734	2402-734	GP-Ø4X12-A6H3.5
7 x 7	140	4	4	10	3.5	1402-744	2402-744	GP-Ø4X12-A6H3.5
8 x 8	140	2	3	10	4	1402-823	2402-823	GP-Ø3X12-A6H2.5
8 x 8	140	3	3	10	4	1402-833	2402-833	GP-Ø3X12-A6H2.5
8 x 8	140	4	3	10	4	1402-843	2402-843	GP-Ø3X12-A6H2.5
8 x 8	140	2	4	10	4	1402-824	2402-824	GP-Ø4X12-A6H3.5
8 x 8	140	3	4	10	4	1402-834	2402-834	GP-Ø4X12-A6H3.5
8 x 8	140	4	4	10	4	1402-844	2402-844	GP-Ø4X12-A6H3.5
10 x 10	150	3	3	10	5	1402-1033	2402-1033	GP-Ø3X14-A8H2.5
10 x 10	150	4	3	10	5	1402-1043	2402-1043	GP-Ø3X14-A8H2.5
10 x 10	150	3	4	10	5	1402-1034	2402-1034	GP-Ø4X14-A8H3.5
10 x 10	150	4	4	10	5	1402-1044	2402-1044	GP-Ø4X14-A8H3.5
10 x 10	150	5	4	10	5	1402-1054	-	GP-Ø4X14-A8H3.5
12 x 12	150	4	4	12	6	1402-1244	2402-1244	GP-Ø4X14-A8H3.5
12 x 12	150	5	4	12	6	1402-1254	2402-1254	GP-Ø4X14-A8H3.5
12 x 12	150	4	5	12	6	1402-1245	2402-1245	GP-Ø5X14-A8H4.5
12 x 12	150	5	5	12	6	1402-1255	2402-1255	GP-Ø5X14-A8H4.5
16 x 16	150	4	4	12	8	1402-1644	2402-1644	GP-Ø4X16-A8H3.5
16 x 16	150	4	5	12	8	-	2402-1645	GP-Ø5X16-A9H4.5
16 x 16	150	5	5	12	8	-	2402-1655	GP-Ø5X16-A9H4.5
16 x 16	150	6	4	12	8	-	2402-1664	GP-Ø4X16-A8H3.5
16 x 16	150	6	6	12	8	-	2402-1666	GP-Ø6X16-A9H5.5
16 x 16	150	8	6	12	8	-	2402-1686	GP-Ø6X16-A9H5.5

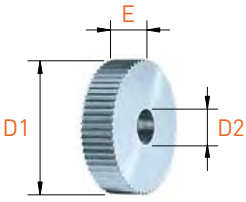
* livré avec chaque porte-outil / mit jedem Halter geliefert / delivered with each holder

Molettes en métal dur

Vollhartmetall Rändelrädchen

Solid carbide knurling wheels

1107



AA



BL



BR



GE

Molettes standards Standard Rändelrädchen Standard knurls	D1	E	D2	Pas (tous les 0.1 mm) Teilung (alle 0.1 mm) Pitch (every 0.1 mm)	
AA (0°)	8	2	3	0.2 - 0.6	
	8	2	4	0.2 - 0.6	
	8	3	3	0.2 - 0.6	
	8	3	4	0.2 - 0.6	
	8	4	3	0.2 - 0.6	
	8	4	4	0.2 - 0.6	
	10	2	3	0.2 - 0.8	
	10	2	4	0.2 - 0.8	
	10	3	3	0.2 - 0.8	
	BL 15° / BR 15° BL 30° / BR 30° BL 45° / BR 45°	10	3	4	0.2 - 0.8
		10	4	3	0.2 - 0.8
		10	4	4	0.2 - 0.8
		10	4	4	0.2 - 0.8
	GE 30° GE 45°	12	4	4	0.3 - 1.0
		15	4	4	0.4 - 1.0
		15	4	5	0.4 - 1.0
		15	5	4	0.4 - 1.0
		15	5	5	0.4 - 1.0
20		4	5	0.5 - 1.2	
20		5	5	0.5 - 1.2	
20		6	6	0.5 - 1.2	
20	8	6	0.5 - 1.2		

Molettes "Quick" "Quick"-Rändelrädchen "Quick"-knurling wheels	D1	E	D2	Pas (tous les 0.1 mm) Teilung (alle 0.1 mm) Pitch (every 0.1 mm)
AA (0°)	8.9	2.5	4	0.2 - 0.8
BL 15° / BR 15°	14.5	3	5	0.4 - 1.0
BL 30° / BR 30°	21.5	5	8	0.5 - 1.2

Exécutions spéciales sur demande
Sonderausführungen auf Anfrage
Special executions on request

Nouveautés présentées dans ce catalogue
Neuheiten dieses Kataloges
New products introduced in this catalogue



APPLITEC

Outil Werkzeug Tool	Type Typ Type	Page Seite Page
Micro-fraises Mikropräzisionsfräser Micro end mills	3271-1	13.10
	3278-1	13.31
Fraises ébauches Schruppfräser Roughing mills	E-DHP3300	13.35
	E-DHP3400	
Fraises en bout de finition Schlicht Schafftfräser Finishing end mills	701S3371	13.56

Dimensions supplémentaires Zusätzliche Abmessungen Additional dimensions		
Outil Werkzeug Tool	∅	Page Seite Page
3170-2	2.10	13.05
	2.20	
	2.30	
	2.40	
	2.60	
	2.70	
	2.80	
3170R-3	2.90	13.07
	0.20	
3271-3	0.35	13.13
	0.65	
	0.95	
	1.05	
	1.15	
	1.35	
	1.45	
	1.55	
	1.65	
	1.75	
	1.85	
3271-5	1.95	13.14
	0.35	
	0.55	
	0.65	
	0.75	
3371-1.3	0.85	13.16
	0.95	
	0.35	
3371-2	2.05	13.17
	0.35	
	0.45	13.18
	0.55	
	0.65	13.21
	0.85	
	0.95	13.26
	1.05	
	1.15	13.30
	1.25	
	1.35	13.32
	1.45	
	1.65	13.33
	1.85	
	1.95	13.33
	1.30	
	1.30	13.21
	0.55	
	0.75	13.26
	0.85	
	0.95	13.30
	0.70	
	0.90	13.30
	1.50	
	2.00	13.32
	2.50	
	0.85	13.32
	1.15	
	1.70	13.33
	1.90	
	2.10	13.33
	2.20	
	2.30	13.33
	2.40	
	2.60	13.33
	2.70	
	2.80	13.33
	2.90	
	1.30	13.33
	1.55	
	2.60	13.33
	2.70	

3371-3	0.45	13.18
	0.55	
	0.65	
	0.85	
	0.95	
	1.05	
	1.15	
	1.25	
	1.35	
	1.45	
	1.65	
3371-8	1.85	13.21
	1.95	
3471-3	1.30	13.21
	0.55	
	0.75	13.26
	0.85	
	0.95	13.30
	0.70	
	0.90	13.30
	1.50	
	2.00	13.32
	2.50	
	0.85	13.32
	1.15	
	1.70	13.33
	1.90	
	2.10	13.33
	2.20	
	2.30	13.33
	2.40	
	2.60	13.33
	2.70	
	2.80	13.33
	2.90	
	1.30	13.33
	1.55	
	2.60	13.33
	2.70	

Outil Werkzeug Tool	Type Typ Type	Page Seite Page
E300-P	E320P	13.61
E300-R	E320R	13.62
E900-P	E920-P	13.63