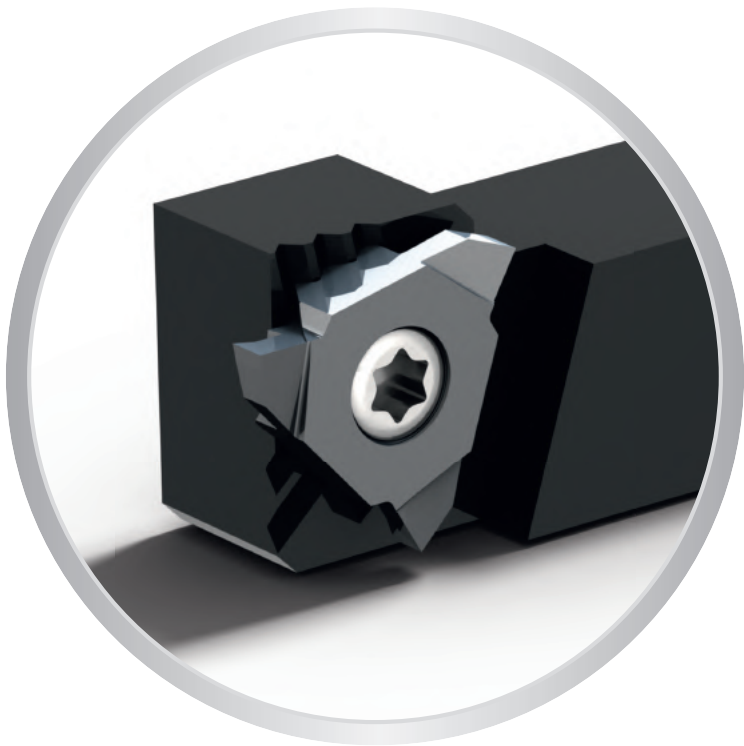


APPLITEC



Nuances
Sorten
Grades

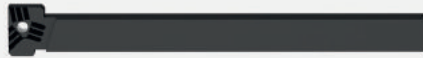
> 5.02

Conseils d'utilisation - Accessoires
Anwendungsempfehlungen - Zubehör
Application recommendations - Accessories



> 5.03

Porte-outils
Halter
Holders



> 5.04

GX

Gorge de précision
Präzisionseinstechen
High precision grooving

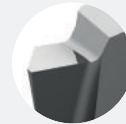
DIN6799
& DIN471



> 5.05

FT

Tournage finition
Schlicht drehen
Fine turning



> 5.06

GT

Fonçage-tournage
Einstechen und drehen
Grooving and turning



> 5.07

GTX

Fonçage-tournage avec coupe positive
Einstechen und drehen mit positivem Spanwinkel
Grooving and turning with positive cut



> 5.08

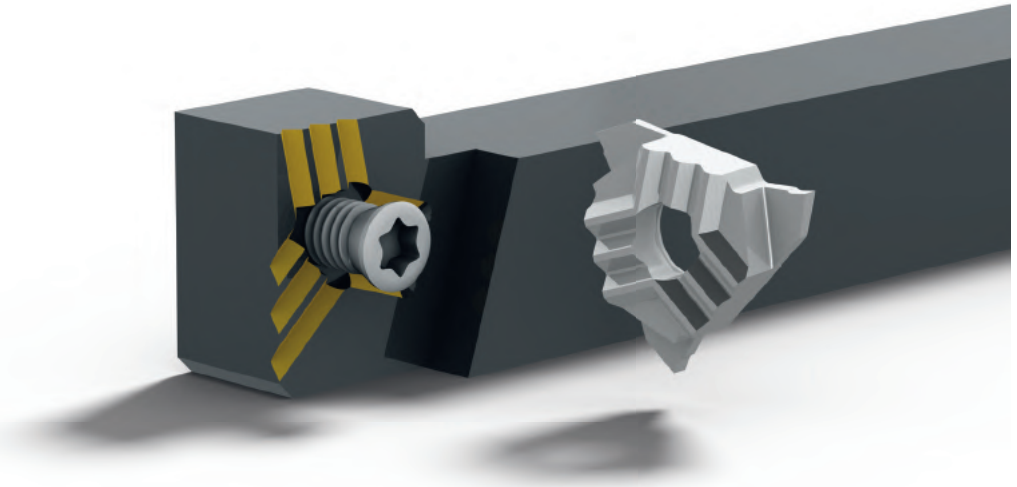
EP

Plaquettes ébauches
WSP-Rohlinge
Blank inserts



> 5.09

Rigid clamping system with the famous Applitec teeth clamping



Nuances micro-grain à dureté élevée

Verschleissfeste Feinkornsorten

Wear resistant micro-grain grades

HTA

μK10 + revêtement PVD
μK10 + PVD Beschichtung
μK10 + PVD coating

- nuance très résistante à l'usure
- pour l'usinage en finition dans des conditions favorables des aciers, aciers inoxydables et alliages de titane

- sehr verschleissfeste Sorte
- für die Feinbearbeitung von Stahl, rostfreiem Stahl und Titanlegierungen bei guten Bearbeitungsbedingungen

- very wear resistant grade
- for light machining of steel, stainless steel and titanium alloys under favourable machining conditions

HN (μK10)

non revêtu
unbeschichtet
uncoated

- nuance micro-grain très résistante à l'usure
- recommandé pour l'usinage du laiton, de l'aluminium et du titane faiblement allié

- sehr verschleissfeste Feinkornsorte
- für die Bearbeitung von Messing und niedrig legiertem Aluminium und Titan empfehlenswert

- very wear resistant micro-grain grade
- suitable for the machining of brass and low alloyed aluminium and titanium

Paramètres de coupe indicatifs

Empfohlene Schnittwerte

Standard machining data

Matière Werkstoff Material	Tournage Drehen Turning		Foncer Einstechen Grooving	
	VC (m/min)	F (mm/U)	VC (m/min)	F (mm/U)
Acier de décolletage Automatenstahl Free-cutting steel	P 120 - 200	0.01 - 0.20	80 - 150	0.01 - 0.15
Acier Stahl Steel < 600 N/mm ²	P 80 - 160	0.01 - 0.18	70 - 120	0.01 - 0.12
Acier Stahl Steel < 800 N/mm ²	P 60 - 120	0.01 - 0.15	60 - 100	0.01 - 0.10
Acier Stahl Steel > 800 N/mm ²	P 50 - 100	0.01 - 0.12	40 - 80	0.01 - 0.08
Acier inoxydable Rostfreistahl Stainless steel	M 60 - 120	0.01 - 0.15	60 - 100	0.01 - 0.08
Aluminium	N 180 - 800	0.01 - 0.30	150 - 300	0.01 - 0.20
Cuivre, laiton, bronze Kupfer, Messing, Bronze Copper, brass, bronze	N 100 - 500	0.01 - 0.30	100 - 300	0.01 - 0.20
Titane Titan Titanium	S 30 - 70	0.01 - 0.12	30 - 50	0.01 - 0.06

Accessoires

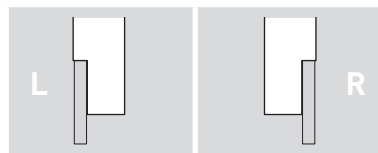
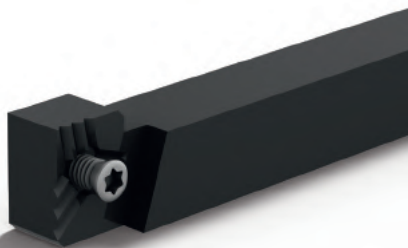
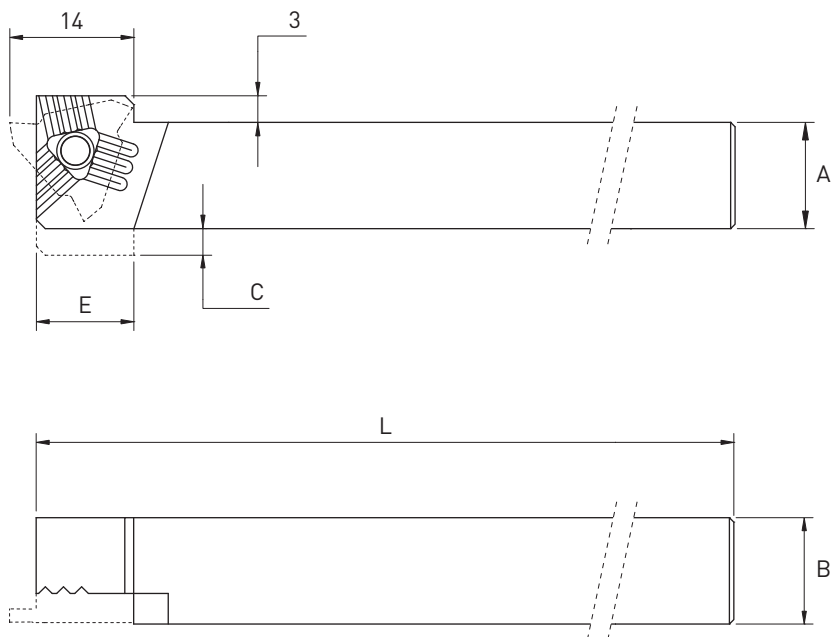
Zubehöre

Accessories

Porte-outils Halter Holders			
T216-H...	V-M4X9-T15	C-T15	SET-NM-TX15

Recommandation de serrage
Drehmoment Empfehlung
Clamping recommendation

3.0 Nm

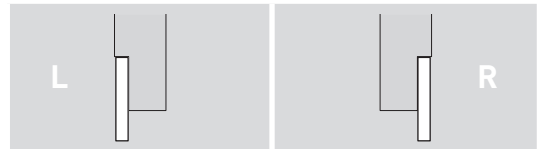
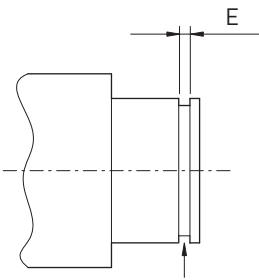
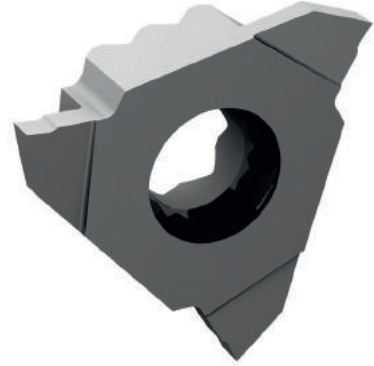
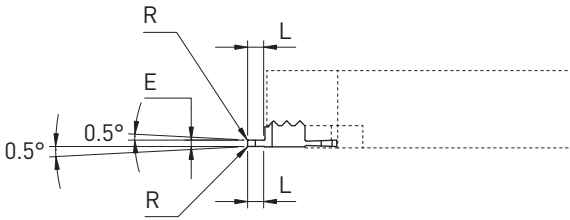
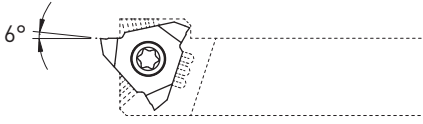


Chaque support est livré avec vis et clé.
 Jeder Halter wird mit Spannschraube(n)
 und Schlüssel geliefert.
 Screw(s) and key are included with each
 tool holder.

AxB	C	E	L	Art. N°	Art. N°
8x10	4	11	115	T216-H0810L	T216-H0810R
10x10	2	8	130	T216-H1010L	T216-H1010R
12x12	-	-	130	T216-H1212L	T216-H1212R
12x12	-	-	90	T216-H1212L-90	T216-H1212R-90
16x16	-	-	120	T216-H1616L	T216-H1616R
20x20	-	-	130	T216-H2020L	T216-H2020R

- Plaquettes de gorge pour circlips
- Einstechwendeplatte für Seegerring
- Grooving inserts for retaining ring

GX



Selon DIN6799 et DIN471
 Gemäss DIN6799 und DIN471
 According to DIN6799 and DIN471

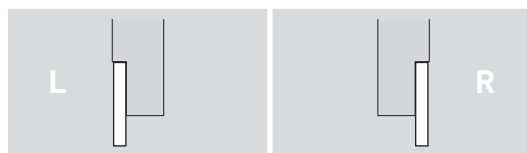
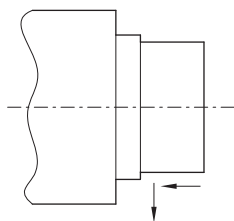
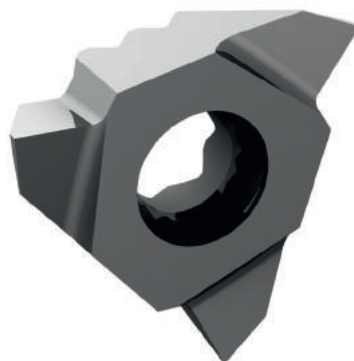
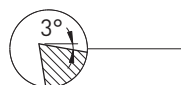
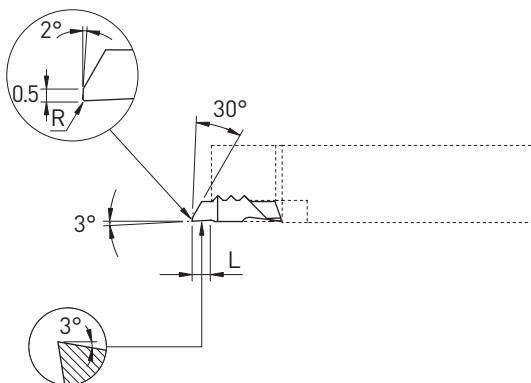
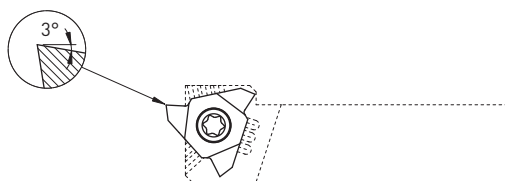


E ±0.01	L	R	L		R	
			Art. N°	HTA HN	Art. N°	HTA HN
0.26	0.8	0.03	T216L-GX026	■ ■	T216R-GX026	■ ■
0.36	0.8	0.03	T216L-GX036	■ ■	T216R-GX036	■ ■
0.46	0.8	0.03	T216L-GX046	■ ■	T216R-GX046	■ ■
0.50	1.5	0.03	T216L-GX050	■ ■	T216R-GX050	■ ■
0.57	1.5	0.03	T216L-GX057	■ ■	T216R-GX057	■ ■
0.67	1.5	0.03	T216L-GX067	■ ■	T216R-GX067	■ ■
0.77	2.0	0.03	T216L-GX077	■ ■	T216R-GX077	■ ■
0.87	2.0	0.03	T216L-GX087	■ ■	T216R-GX087	■ ■
0.97	2.5	0.03	T216L-GX097	■ ■	T216R-GX097	■ ■
1.00	2.5	0.03	T216L-GX100	■ ■	T216R-GX100	■ ■
1.10	2.5	0.03	T216L-GX110	■ ■	T216R-GX110	■ ■
1.20	2.5	0.03	T216L-GX120	■ ■	T216R-GX120	■ ■
1.30	2.5	0.03	T216L-GX130	■ ■	T216R-GX130	■ ■
1.50	2.5	0.03	T216L-GX150	■ ■	T216R-GX150	■ ■
1.60	2.5	0.03	T216L-GX160	■ ■	T216R-GX160	■ ■
1.85	2.5	0.03	T216L-GX185	■ ■	T216R-GX185	■ ■
2.00	2.5	0.03	T216L-GX200	■ ■	T216R-GX200	■ ■
2.50	2.5	0.03	T216L-GX250	■ ■	T216R-GX250	■ ■

TRIO-LINE

Tournage avant
Vorwärts drehen
Front turning

FT



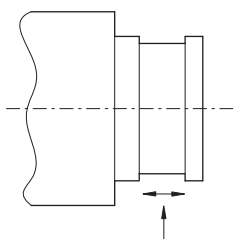
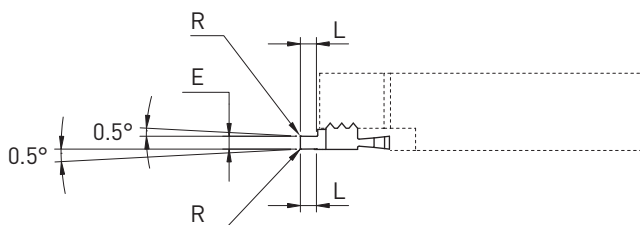
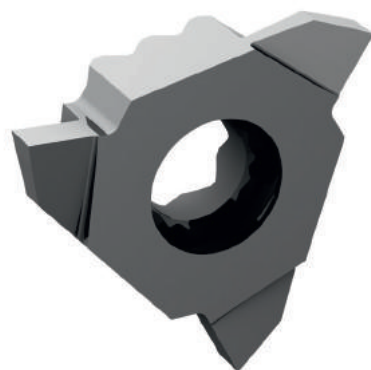
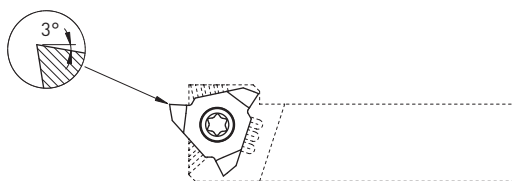
		L		R	
L	R	Art. N°	HTA HN	Art. N°	HTA HN
3.0	0.03	T216L-FT	■ ■	T216R-FT	■ ■
3.0	0.08	T216L-FT-R08	■ ■	T216R-FT-R08	■ ■

Fonçage-tournage

Einstecken und drehen

Grooving and turning

GT

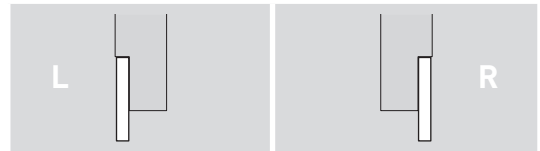
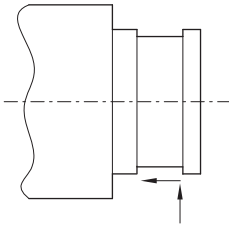
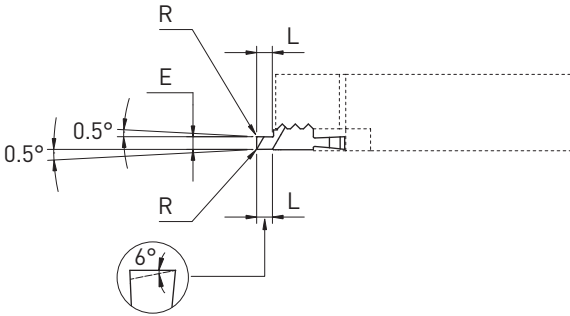
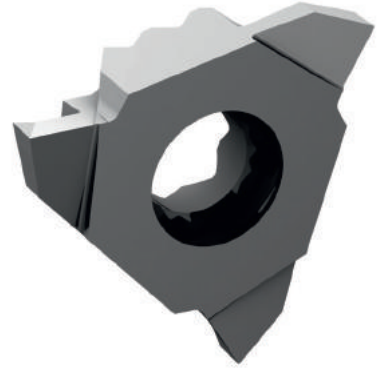
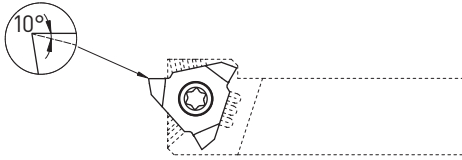


E	L	R	Art. N°	HTA		Art. N°	HN	
				■	■		■	■
0.5	1.5	0.03	T216L-GT050	■	■	T216R-GT050	■	■
1.0	2.5	0.03	T216L-GT100	■	■	T216R-GT100	■	■
1.0	2.5	0.08	T216L-GT100-R08	■	■	T216R-GT100-R08	■	■
1.5	2.5	0.03	T216L-GT150	■	■	T216R-GT150	■	■
1.5	2.5	0.08	T216L-GT150-R08	■	■	T216R-GT150-R08	■	■
1.5	2.5	0.15	T216L-GT150-R15	■	■	T216R-GT150-R15	■	■
2.0	2.5	0.03	T216L-GT200	■	■	T216R-GT200	■	■
2.0	2.5	0.08	T216L-GT200-R08	■	■	T216R-GT200-R08	■	■
2.0	2.5	0.15	T216L-GT200-R15	■	■	T216R-GT200-R15	■	■
2.5	2.5	0.15	T216L-GT250-R15	■	■	T216R-GT250-R15	■	■

TRIO-LINE

Fonçage-tournage
Einstecken und drehen
Grooving and turning

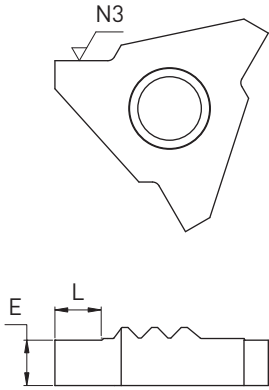
GTX



E	L	R	L		R	
			Art. N°	HTA HN	Art. N°	HTA HN
1.0	2.5	0.03	T216L-GTX100	■ ■	T216R-GTX100	■ ■
1.0	2.5	0.08	T216L-GTX100-R08	■ ■	T216R-GTX100-R08	■ ■
1.5	2.5	0.03	T216L-GTX150	■ ■	T216R-GTX150	■ ■
1.5	2.5	0.08	T216L-GTX150-R08	■ ■	T216R-GTX150-R08	■ ■
1.5	2.5	0.15	T216L-GTX150-R15	■ ■	T216R-GTX150-R15	■ ■
2.0	2.5	0.03	T216L-GTX200	■ ■	T216R-GTX200	■ ■
2.0	2.5	0.08	T216L-GTX200-R08	■ ■	T216R-GTX200-R08	■ ■
2.0	2.5	0.15	T216L-GTX200-R15	■ ■	T216R-GTX200-R15	■ ■
2.5	2.5	0.15	T216L-GTX250-R15	■ ■	T216R-GTX250-R15	■ ■

- Plaquettes ébauches
- WSP-Rohlinge
- Blank inserts

EP



		L		R	
E	L	Art. N°	HTA HN	Art. N°	HTA HN
~3	3	T216L-EP	■	T216R-EP	■